

Information

The Power Vacuum Pickup and Estate Vacuum are wonderful tools for picking up just about any organic lawn debris. They're great for pine needles, acorns, lawn thatch and more. They are also excellent tools for clearing out window wells, culverts, planting beds and other areas that are hard to reach.

Assemble the Handles

The vacuum wand handles are shipped unattached to prevent shipping damage.

Tools you'll need:

1/2" Wrench, (2) 7/16" Wrenches, Flat blade Screwdriver or 5/16" Nut Driver and Scissors.

1. Cut the nylon cable tie that is holding the two parts of the handle.
2. Slip the eyebolt into the hole above the bend of the long handle tube, and secure with the 1/4" Cap Nut. Tighten with two 7/16" wrenches. **Figure 1 & 1a.**
3. Slide the long handle tube into the mounting bracket attached to the wand inlet, making sure the handle grip lines up over the bent portion of the wand inlet. Line up the 2 holes nearest the end of the long handle tube with the square holes in the mounting bracket. Secure with the two included carriage bolts and nuts. Tighten with the 1/2" wrench. **Figure 2.**

NOTE: If you are under 5'6" tall, you may find it more comfortable to shorten up the wand by mounting the long handle tube through the second and third holes. **Figure 2a.**

4. Attach the side handle tube to the hole beneath the bend in the long handle tube, using the last included carriage bolt and nut.

Right handed users, the side handle tube should look like **figure 3**.

Left handed users can mount the side handle to the other side as shown in **figure 4**.

Tighten with 1/2" wrench.

Connect the Hose to the Vacuum Wand

1. Slide the vacuum hose over the end of the molded wand 2-3". Secure with the bridge-type band clamp supplied. Use a 5/16" nut driver or flat blade screwdriver as shown in **figure 5**.
2. Be sure the "bridge" on the reverse side of the band clamp saddles neatly over the hose ribs shown in **figure 6**. Also be sure the stainless steel bands are seated between the hose ribs all around.
3. Attach shoulder strap's clip to the eyebolt on top of the handle tube.

WARNING

Always stop the Cyclone Rake engine and your mower engine before changing hoses. High vacuum forces and rotating machinery can cause severe personal injury. NEVER change hoses unless both engines are STOPPED.

Fig. 1

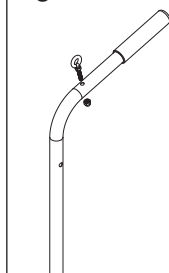


Fig. 1a

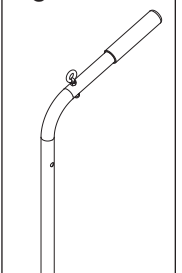


Fig. 2

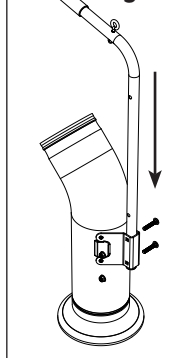


Fig. 2a

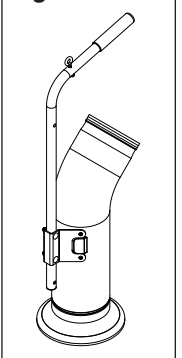


Fig. 3

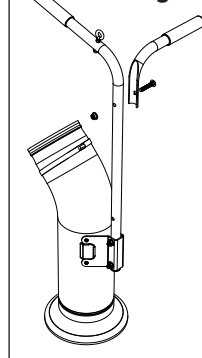


Fig. 4

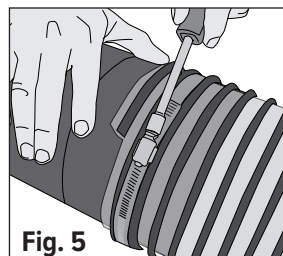
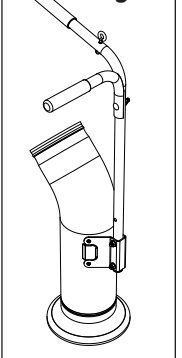


Fig. 5

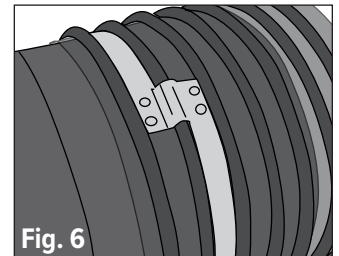


Fig. 6

Adjusting the Shoulder Strap Length

The length of the shoulder strap can be easily adjusted to accommodate persons of various heights. Each side of the shoulder strap has a Velcro strip. You can peel back the Velcro to release it. Then re-fasten the Velcro in the most comfortable position for your use. To get the maximum (or minimum) extension length, adjust the Velcro on both sides.

Operating Directions

Power Vacuum Pickup™

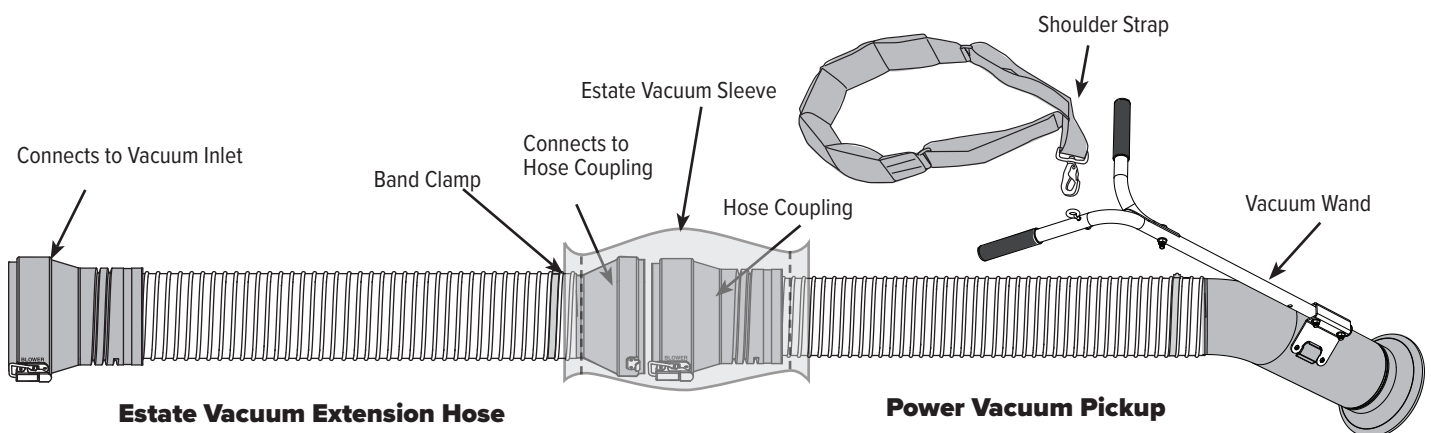
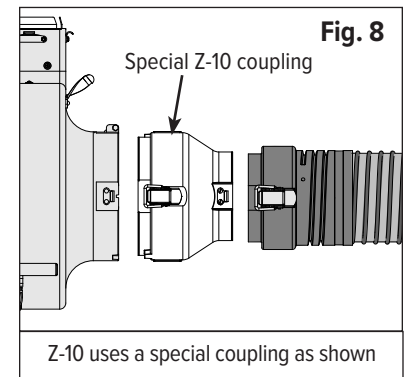
1. **Stop both engines before attaching the Power Vacuum Pickup.** Unlock and remove the mower deck hose and coupling. Attach the Power Vacuum Pickup to the vacuum inlet. Be sure both latches are firmly locked before restarting the engine.

Note: For the Z-10 model, connect the special Z-10 coupling to the inlet, then connect the Power Vacuum Pickup to the coupling (Fig. 8).

2. Pass the wand back and forth over the material, allowing it to enter the wand in moderate amounts.
3. Keep the hose as straight as possible while vacuuming. This will increase the vacuum power and minimize the possibility of hose jams. If your hose is coiled up on the ground, straighten it out before starting. Unnecessary twists and turns can reduce power.
4. Remove long sticks before vacuuming. The hose may jam if you feed material longer than the hose diameter.

Estate Vacuum™

The Estate Vacuum works exactly like the Power Vacuum Pickup. Simply connect the extension hose onto the vacuum inlet on your Cyclone Rake. For Z-10 owners, use the special Z-10 coupling as in Figure 8. Before connecting the Power Vacuum Pickup to the Extension Hose, install the Estate Vacuum Sleeve onto either one of the hose couplings. Then couple the Power Vacuum Pickup hose to the Extension Hose and move the Sleeve over the latches to keep the connection secure.

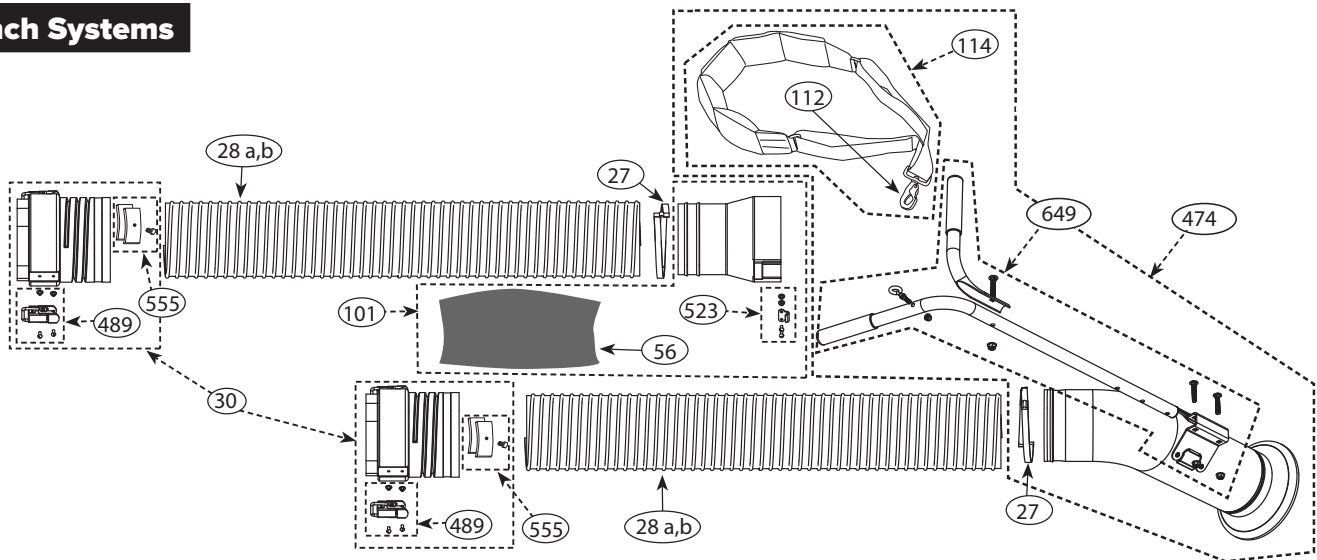


Clearing Hose Jams

The vacuum hose is a special smooth-bore design to minimize jams. If jams occur, it is likely that debris was fed into the hose too fast, or that a stick has wedged inside the hose. If jams occur, here's how to clear them:

1. Straighten out the hose with the engine running, and give it a few shakes. Keep it as straight as possible. Many times, this will clear the jam. The hose is semi-transparent and you can often see where the blockage is.
2. If this fails, stop the engine and disconnect the hose. If you can reach the blockage, pull it out with your hands. If not, use a soft, smooth pole such as a rake handle or broom handle to push out the blockage. Do not use sharp metal objects, such as pipe, unless you wrap the end with duct tape. The hose is expensive and you don't want to puncture it.

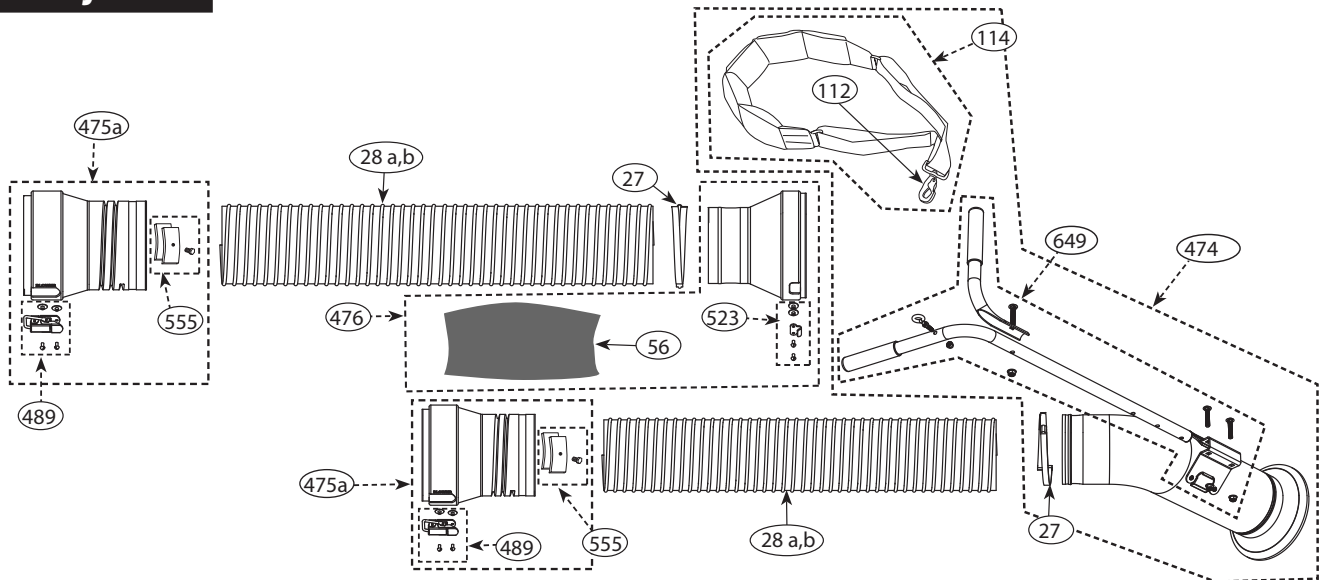
7-inch Systems



Ref. #	NAME	PART #
27	6" Band clamp, bridge type	01-02-024
28a	15 ft.- PVC (green), 6" dia	RPVC-06-15
28b	15 ft. - Urethane (yellow), 6" dia	RPUR-06-15
30	6" x 7" Power Vacuum collar, complete w/latches	01-01-721
56	Estate Vacuum Sleeve	01-01-2190
101	Extension collar, complete w/strikes	01-02-047
109	5/16-18 x 1.75" Carriage bolt	01-01-1034
112	Spring clip	01-01-1109
114	Strap w/ spring clip	01-04-055

Ref. #	NAME	PART #
474	Wand, complete w/handles & shoulder strap	01-04-2120
489	Single latch w/hardware	01-03-045
523	Standard strike w/hardware	01-02-564
555	Inner & Outer hose clamp with 3/4" screw	01-02-122
649	Wand Handle Replacement Kit	01-03-2124

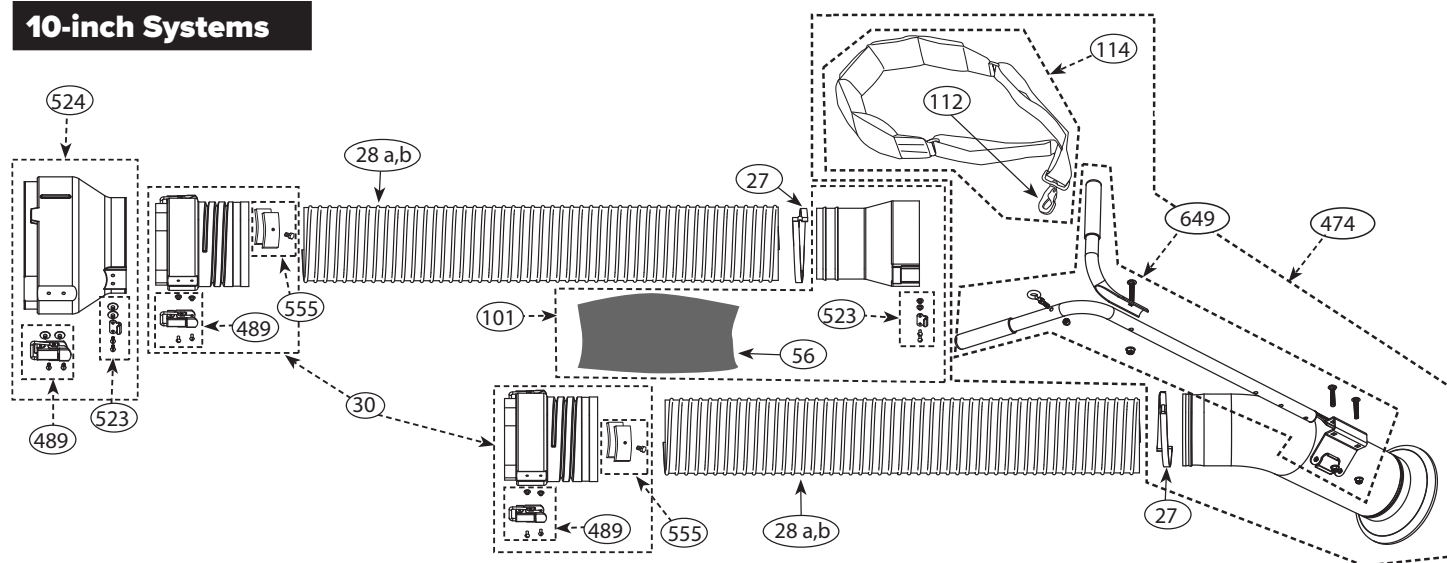
8-inch Systems



Ref. #	NAME	PART #
27	6" Band clamp, bridge type	01-02-024
28a	15 ft.- PVC (green), 6" dia	RPVC-06-15
28b	15 ft. - Urethane (yellow), 6" dia.	RPUR-06-15
56	Estate Vacuum Sleeve	01-01-2190
109	5/16-18 x 1.75" Carriage bolt	01-01-1034
112	Spring clip	01-01-1109
114	Strap w/ spring clip	01-04-055
474	Wand, complete w/handles & shoulder strap	01-04-2120
475a	6" x 8" Power Vacuum collar, complete w/latches	01-02-137

Ref. #	NAME	PART #
476	Extension collar, complete w/strikes	01-02-295
489	Single latch w/hardware	01-03-045
523	Standard strike w/hardware	01-02-564
555	Inner & Outer hose clamp with 3/4" screw	01-02-122
649	Wand Handle Replacement Kit	01-03-2124

10-inch Systems



Ref. #	NAME	PART #
27	6" Band clamp, bridge type	01-02-024
28a	15 ft.- PVC (green), 6" dia	RPVC-06-15
28b	15 ft. - Urethane (yellow), 6" dia.	RPUR-06-15
30	6" x 7" Power Vacuum collar, complete w/latches	01-01-721
56	Estate Vacuum Sleeve	01-01-2190
101	Extension collar, complete w/strikes	01-02-047
109	5/16-18 x 1.75" Carriage bolt	01-01-1034
112	Spring clip	01-01-1109
114	Strap w/ spring clip	01-04-055
474	Wand, complete w/handles & shoulder strap	01-04-2120
489	Single latch w/hardware	01-03-045
523	Standard strike w/hardware	01-02-564
524	10" x 7" Power Vacuum coupling, complete w/latches - Z-10	06-02-003
555	Inner & Outer hose clamp with 3/4" screw	01-02-122
649	Wand Handle Replacement Kit	01-03-2124